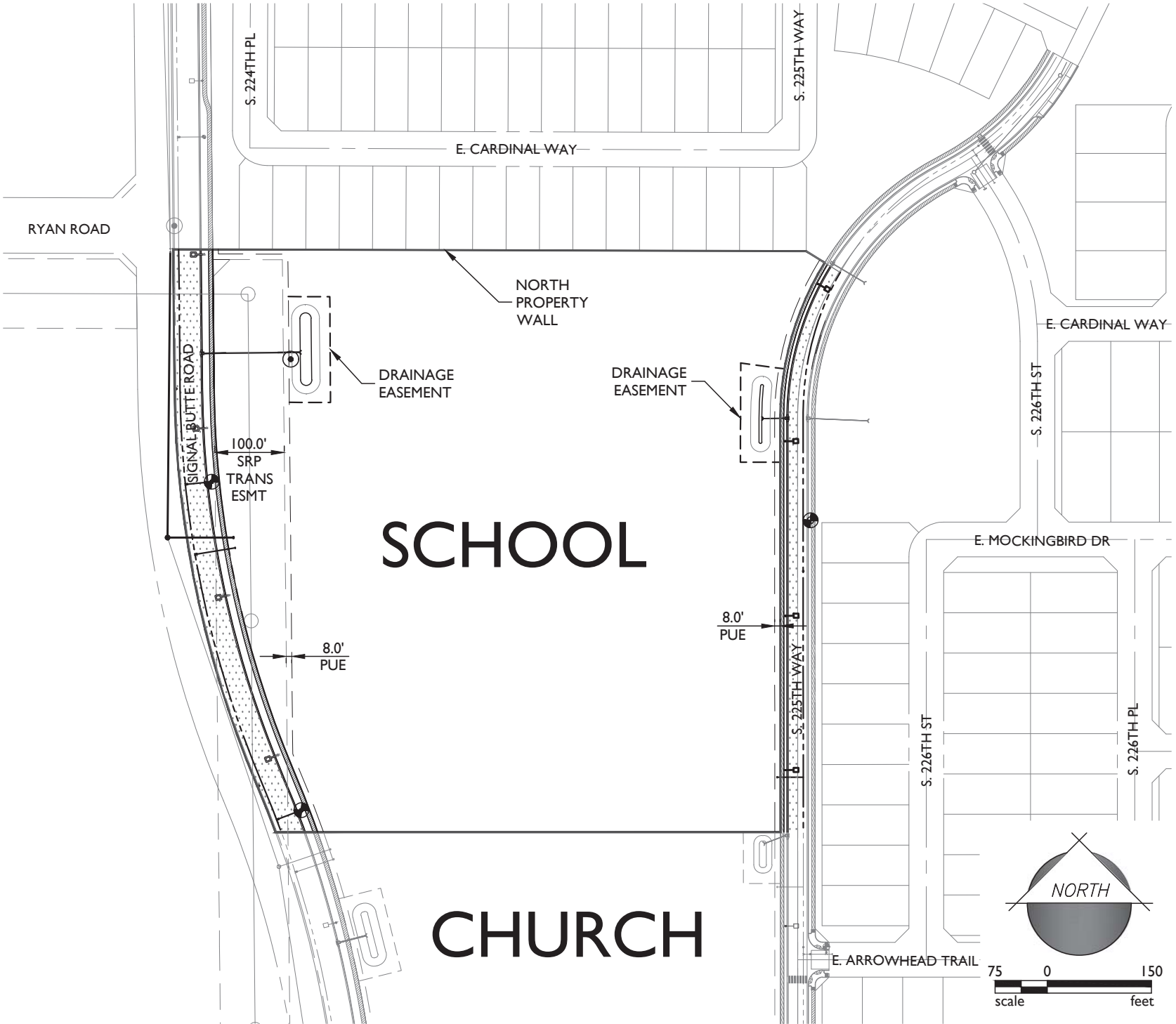


S. 225TH WAY SUBTOTAL		
TYPE:	QTY:	COST:
6" Vertical Curb	826 LF	
8" Sewer Line	---	---
Sewer Manholes	---	---
8" Water Line	427 LF	
Fire Hydrants	1 EA	
Asphalt - Local	1232 SY	
Thickened Edge	---	---
Sidewalk	3724 SF	
Catch Basin & Headwall	1 EA	
Storm Drain	45 LF	
Street Lights	4 EA	
Dry Utilities	826 LF	

SIGNAL BUTTE ROAD SUBTOTAL		
TYPE:	QTY:	COST:
6" Vertical Curb	861 LF	
8" Sewer Line	510 LF	
Sewer Manholes	1 EA	
12" Water Line	920 LF	
Fire Hydrants	2 EA	
Asphalt - Arterial	3681 SY	
Thickened Edge	860 LF	
Sidewalk	5166 SF	
Catch Basin & Headwall	1 EA	
Storm Drain	150 LF	
Street Lights	4 EA	
Dry Utilities	861 LF	

TOTAL OF COSTS & QUANTITIES		
TYPE:	QTY:	COST:
6" Vertical Curb	1687 LF	
8" Sewer Line	510 LF	
Sewer Manholes	1 EA	
8" Water Line	427 LF	
12" Water Line	920 LF	
Fire Hydrants	3 EA	
Asphalt - Local	1232 SY	
Asphalt - Arterial	3681 SY	
Thickened Edge	860 LF	
Sidewalk	8890 SF	
Catch Basin & Headwall	2 EA	
Storm Drain	195 LF	
Street Lights	8 EA	
Dry Utilities	1687 LF	
North Property Wall	408 LF	



2045 S. Vineyard Ave.
Ste. 101 Mesa, AZ 85210
T:480.503.2250 | F:480.503.2258
www.epsgroupinc.com



Fulton Homes Barney Farms

School Parcel Construction Costs

JOB NO
16-394

SHEET
1
OF 1

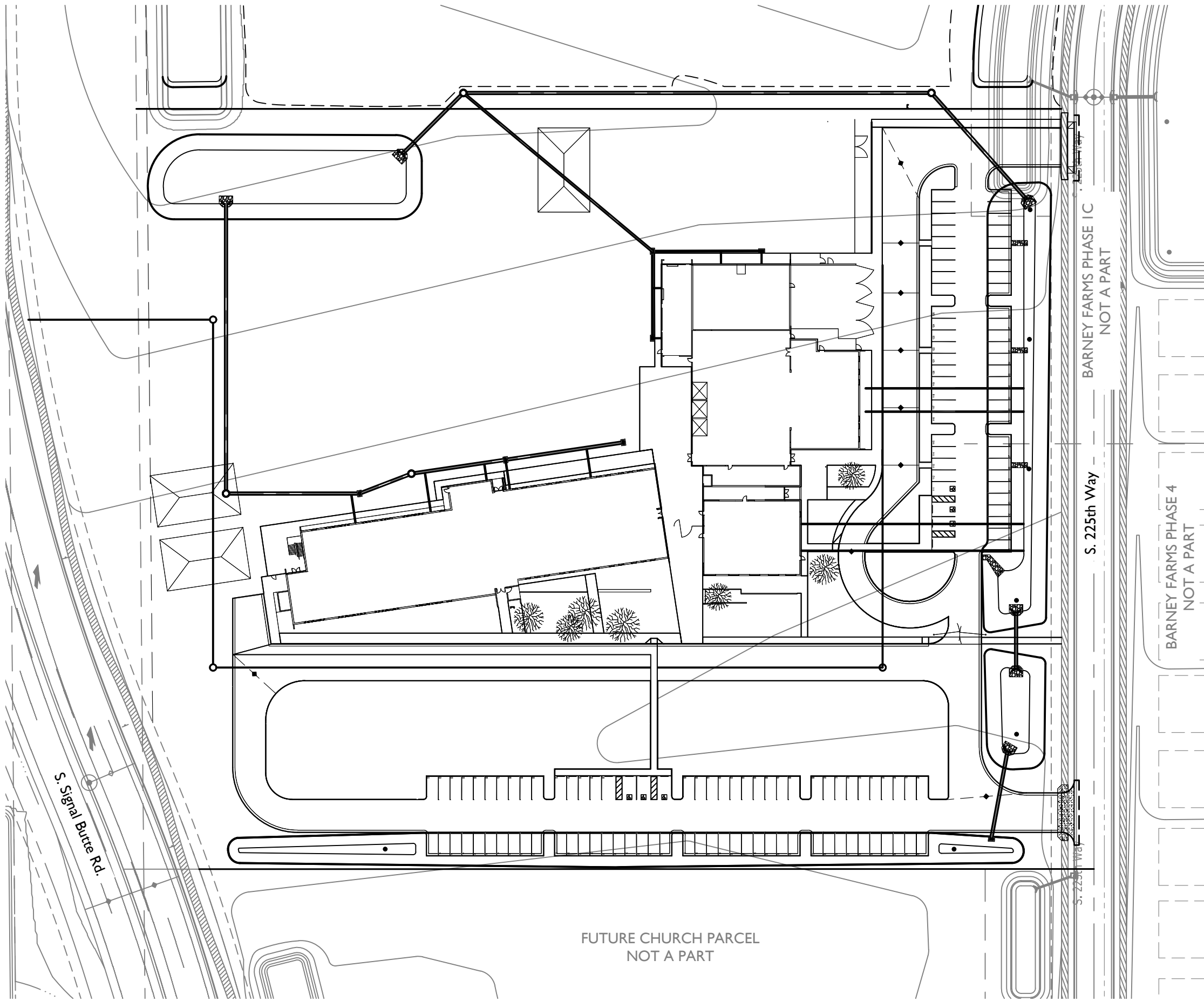
ESTIMATED QUANTITIES

QUANTITIES ARE FOR ESTIMATING PURPOSES ONLY.
ENGINEER MAKES NO GUARANTEE OF ACCURACY.

ITEM QUANTITY

IMPROVEMENT PLANS
FOR
QCUSD ELEMENTARY SCHOOL #8

A PORTION OF THE WEST HALF OF SECTION 12, TOWNSHIP 2 SOUTH, RANGE 7 EAST
OF THE GILA AND SALT RIVER BASE AND MERIDIAN
MARICOPA COUNTY, ARIZONA



Onsite Civil Site Plan for reference

UNDERGROUND UTILITIES

- THE EXISTENCE AND LOCATION OF ANY UNDERGROUND UTILITY OR STRUCTURE DEPICTED HEREIN IS BASED UPON THE BEST AVAILABLE INFORMATION FURNISHED BY THE UTILITY OR STRUCTURE OWNER AT THE TIME OF THE SURVEY.
- TO THE BEST OF OUR KNOWLEDGE, THERE ARE NO OTHER EXISTING UTILITIES WITHIN THE PROJECT LIMITS EXCEPT AS SHOWN ON THESE DRAWINGS.
- THE ENGINEER AND TOWN ASSUME NO RESPONSIBILITY FOR THE ACCURACY OF THE UTILITY LOCATIONS DEPICTED IN THESE DRAWINGS.
- THE CONTRACTOR SHALL CALL BLUE STAKE AT (602) 263-1100 OR 811 AT LEAST 48 HOURS PRIOR TO ANY CONSTRUCTION ACTIVITY. IT IS THE CONTRACTOR'S RESPONSIBILITY TO CONTACT ALL INVOLVED UTILITIES AND FIELD VERIFY THE LOCATION(S) OF ALL UTILITIES.
- IF DISCREPANCIES IN UTILITY LOCATIONS ARE FOUND, THE CONTRACTOR SHALL NOTIFY THE TOWN'S PROJECT REPRESENTATIVE IMMEDIATELY.

UTILITY COORDINATION LIST

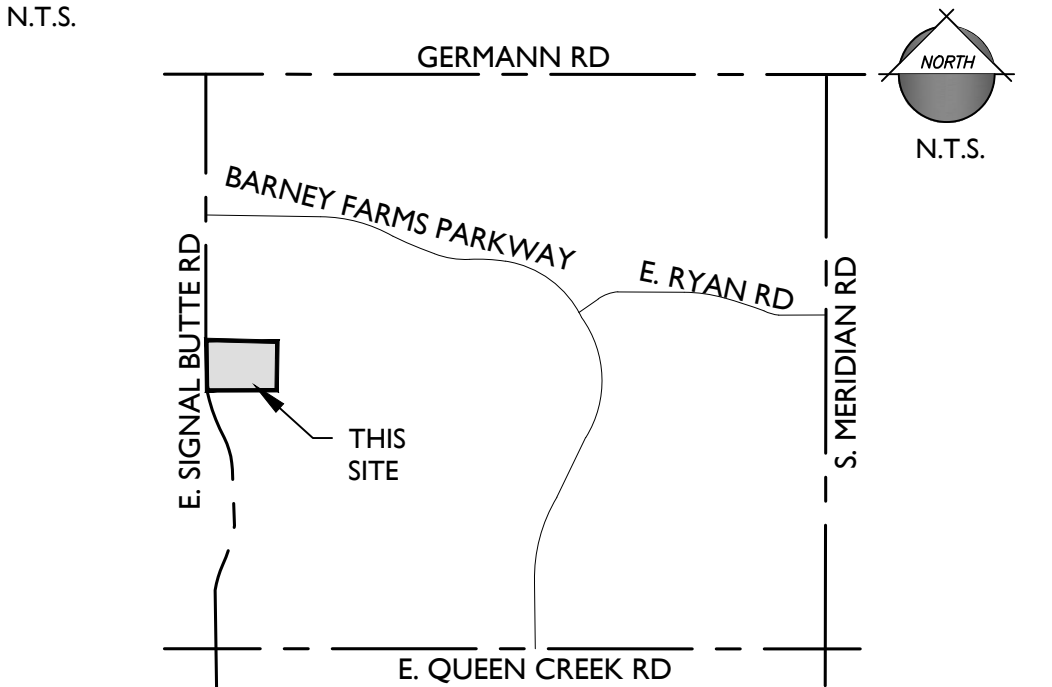
THESE PLANS HAVE BEEN SUBMITTED TO THE FOLLOWING UTILITY COMPANIES AND THE WORK SHOWN HEREIN HAS BEEN REVIEWED FOR POTENTIAL CONFLICTS AND CLEARED OF KNOWN CONFLICTS WITH THEIR FACILITIES. THE UTILITY SIZES AND LOCATIONS SHOWN HEREIN IS IN AGREEMENT WITH PROVIDED UTILITY COMPANY RECORDS. IDENTIFIED CONFLICTS SHALL BE RESOLVED AS NOTED IN THE PLANS AND / OR SPECIAL PROVISIONS OR CONFLICTING UTILITY FACILITIES HAVE BEEN MOVED AN NO LONGER IN CONFLICT. UNFORESEEN OR UNIDENTIFIED CONFLICTS DISCOVERED IN THE FIELD SHALL BE REPORTED IMMEDIATELY TO THE APPROPRIATE UTILITY COMPANY REPRESENTATIVE AND BLUE STAKE CENTER. ALL SUCH UNKNOWN CONFLICTS SHALL BE RESOLVED BY THE DESIGN TEAM AND UTILITY PRIOR TO CONSTRUCTION CONTINUING IN THE LOCATION.

UTILITY	REPRESENTATIVE	PHONE	EMAIL	CONTACT DATE
ED6 (SRP POWER DIST.)	PAMELA JOHNSTON	(480) 987-3461	PJOHNSTONNEWMAGMA@MEDIACOMBB.NET	02/01/2017
SRP POWER TRANS.				
SW GAS	DAVID ELLINGSON	(480) 987-3002	DAVID.ELLINGSON@SWGAS.COM	02/03/2017
CENTURYLINK				
COX COMM.				
TOQC WATER	DARREN FARAR	(480) 358-3476	DARREN.FARAR@QUEENCREEK.ORG	05/16/2016
TOQC SEWER	DARREN FARAR	(480) 358-3476	DARREN.FARAR@QUEENCREEK.ORG	05/16/2016

SHEET INDEX

DESCRIPTION	SHEET NO	SHEET TITLE
COVER SHEET	1	C000
NOTES SHEET	2 - 3	C001 - C002
DETAIL SHEET	4 - 5	C100 - C101
GRADING AND DRAINAGE SHEET	6 - 9	C301 - C304
STORM DRAIN PROFILE SHEET	10	C305
UTILITY SHEET	11	C401
SEWER PROFILE SHEET	12	C402
PAVING SHEET	13	C501
STORM WATER POLLUTION PREVENTION PLAN	14 - 15	C601 - C602

VICINITY MAP



PROJECT TEAM

TOWN COUNCIL:
MAYOR - GAIL BARNEY
VICE MAYOR - JEFF BROWN
COUNCIL MEMBERS
ROBIN BENNING
JAKE HOFFMAN
DAWN OLIPHANT
EMILENA TURLEY
JULIA WHEATLEY

CIVIL ENGINEER:
EPS GROUP, INC.
1130 N. ALMA SCHOOL RD. STE 120
MESA, AZ 85201
TEL: (480)-503-2250
FAX: (480)-503-2258
CONTACT: DAN AUXIER, PE
DAN.AUXIER@EPSGROUPINC.COM

PROPERTY DEVELOPER:
TOWN OF QUEEN CREEK
22356 S. ELLSWORTH ROAD
QUEEN CREEK, AZ 85142

PROJECT INFORMATION

APN XXXXXXXXXXXXXXXX
ZONING: XXX
NO. OF LOTS X
NO. OF TRACTS N/A

BASIS OF BEARING

THE WEST LINE OF THE SW ¼ OF SECTION 12, TOWNSHIP 2 SOUTH, RANGE 7 EAST OF THE GILA & SALT RIVER MERIDIAN, MARICOPA COUNTY, ARIZONA

ASSUMED BEARING = SOUTH 00°33'14" EAST

BENCHMARK

3" MARICOPA COUNTY BRASS CAP IN HAND HOLE AT NORTH ¼ CORNER OF SECTION 11, TOWNSHIP 2 SOUTH, RANGE 7 EAST OF THE GILA & SALT RIVER MERIDIAN, MARICOPA COUNTY, ARIZONA

APPROVALS

THE AUTHORIZED REPRESENTATIVES OF THE FOLLOWING AGENCIES HEREBY ACKNOWLEDGE OR HAVE ACKNOWLEDGED THEY HAVE REVIEWED AND APPROVED THE DESIGN SHOWN HEREIN. CONSTRUCTION MAY BEGIN AFTER ALL APPROPRIATE PERMITS HAVE BEEN OBTAINED.

TOWN PUBLIC WORKS DIRECTOR

TOWN ENGINEER

TOWN TRAFFIC ENGINEER

(AS REQUIRED)

TOWN UTILITIES DIRECTOR

(AS REQUIRED)

MARICOPA COUNTY ENVIRONMENTAL SERVICE DEPT

ADD OTHER AGENCIES AS NECESSARY (FCDMC, MCDOT, ADOT, CITY OF MESA, TOWN OF GILBERT, PINAL COUNTY)

AS-BUILT CERTIFICATION

I HEREBY CERTIFY THAT THE "AS-BUILT" INFORMATION AS SHOWN HEREON WAS MADE UNDER MY SUPERVISION, OR AS NOTED, AND IS CORRECT TO THE BEST OF MY KNOWLEDGE AND BELIEF.

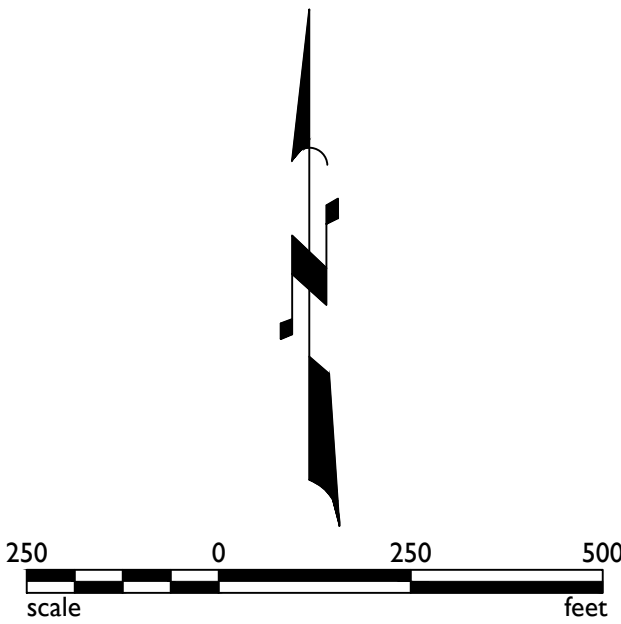
REGISTERED LAND SURVEYOR DATE

REGISTRATION NUMBER

I6-394 - Fulton Homes Barney Farms - Signal Butte Road - Paving Plans

Oct 03, 2018 9:12am S:\Projects\2016\16-394\Civil\Construction Documents\Phase 1\INF-Signal Butte Road\Paving\Cover Sheets\16-394 - Signal Butte - Pav - ID02.dwg

ytarek



THE PROMPT PAY LAW WILL BE ALTERED FOR THIS CONTRACT NOTICE OF EXTENDED PAYMENT PROVISION
The construction contract will allow the owner to make payment within thirty (30) days after certification and approval of billings.

Project: Fulton Homes Barney Farms - Signal Butte Road
Paving Plans
Queen Creek, Arizona

Storm Drain Index

Revisions:



Designer: SB
Drawn by: MG

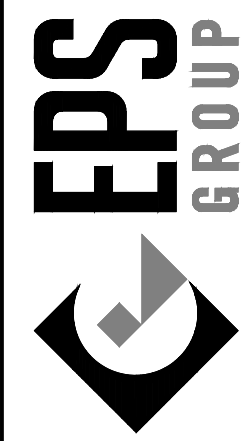


Job No.
16-394

ID02

Sheet No.
4
of 22

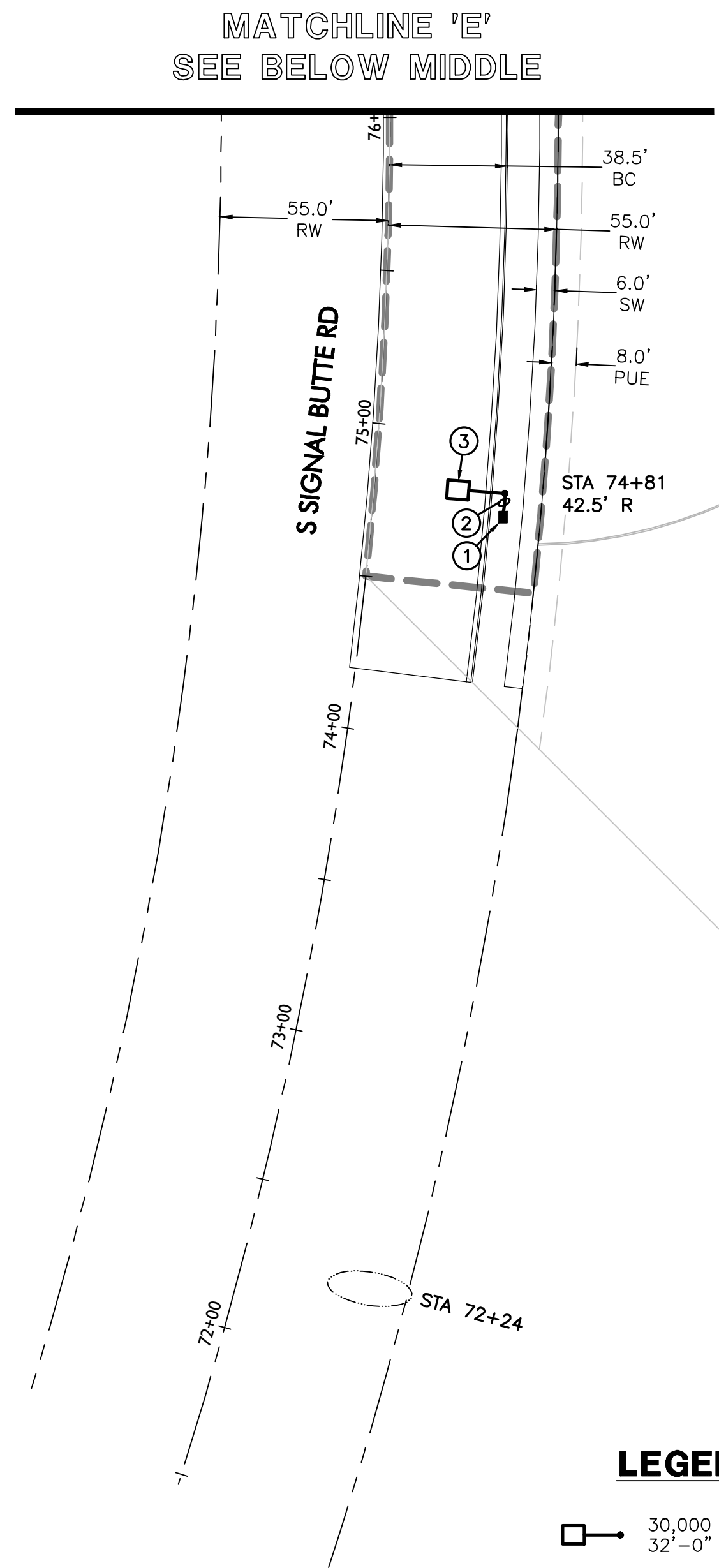
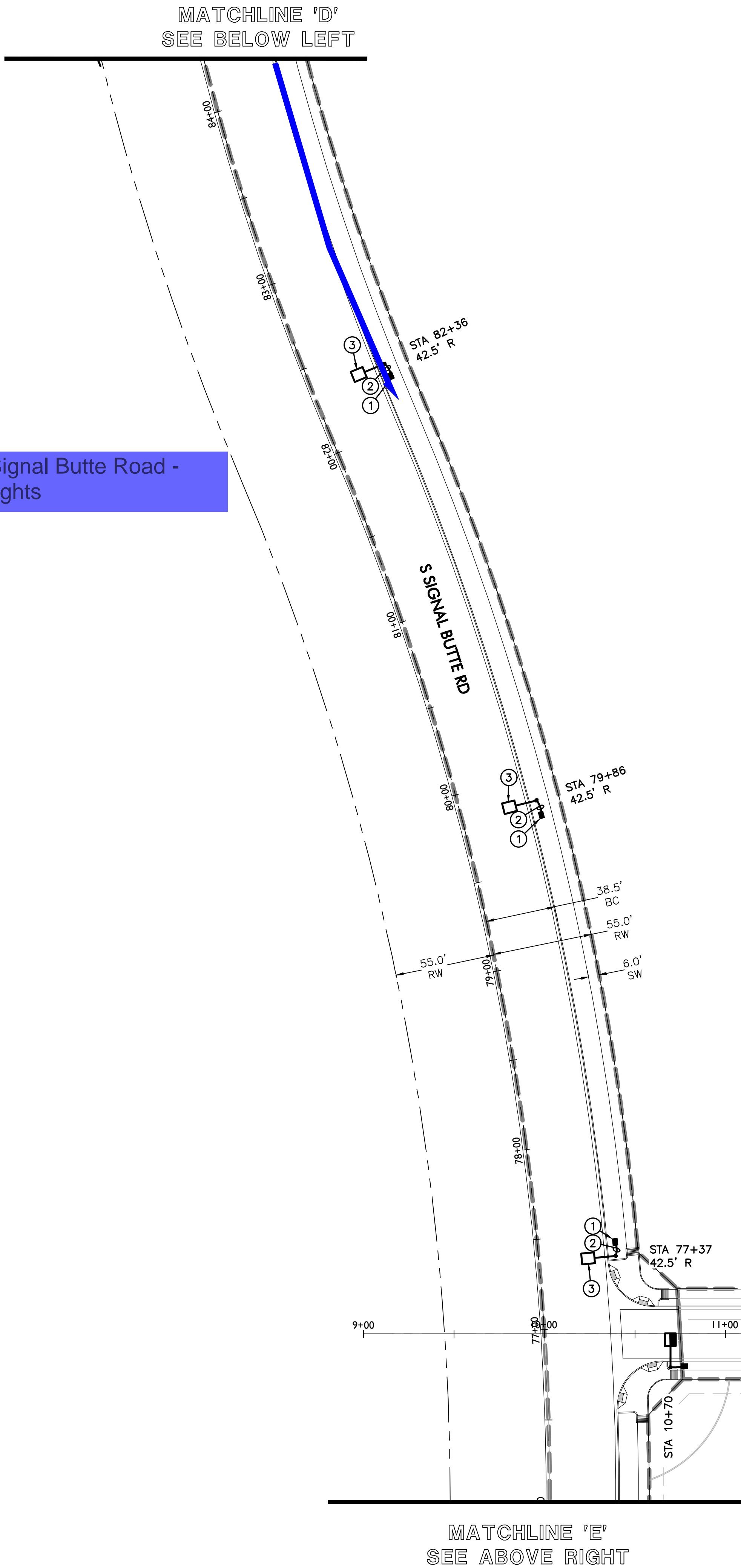
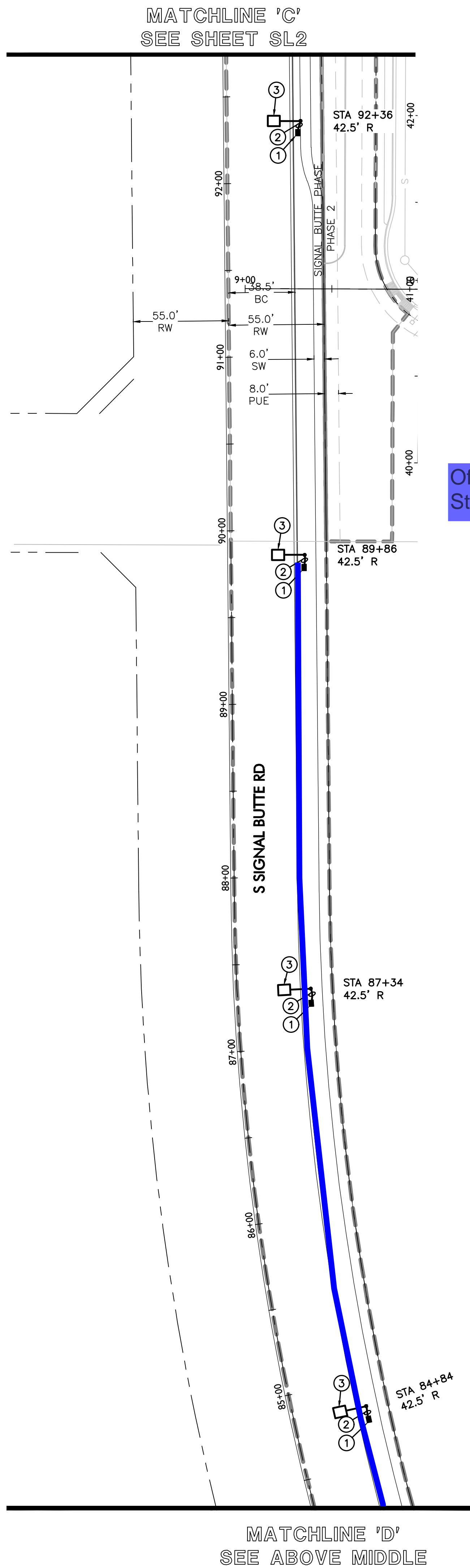
2045 S. Vineyard Ave, Suite 101
Mesa, AZ 85210
T:480.503.2250 | F:480.503.2258
www.epsgroupinc.com



E18-0483

EPS-01

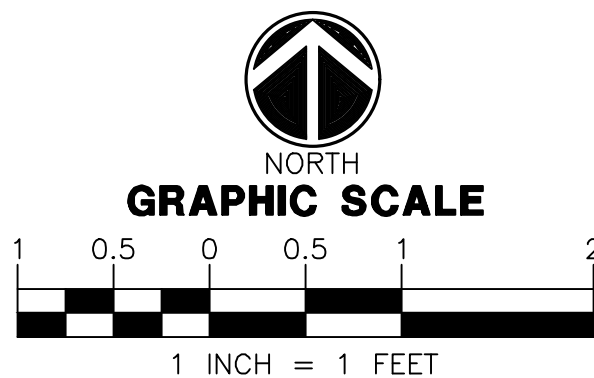
THESE DRAWINGS AND SPECIFICATIONS ARE THE SOLE PROPERTY OF WRIGHT ENGINEERING CORPORATION AND MAY NOT BE REPRODUCED OR MODIFIED FOR ANY USE WITHOUT THE EXPRESS WRITTEN PERMISSION OF WRIGHT ENGINEERING CORPORATION.



- LEGEND**
- 30,000 LUMEN DUSK TO DAWN LIGHT (TO BE INSTALLED BY SRP)
32'-0" MTG HEIGHT (5" SQUARE POLE, BRONZE)
 - STREET LIGHT PER ADJACENT PLAN SET
 - PULL BOX
 - CONDUIT RUN
 - FIRE HYDRANT
 - FUTURE STREET LIGHT

CONSTRUCTION NOTES:

1. INSTALL SRP PULL BOX NEXT TO THE POLE PER PULL BOX DETAIL ON SHEET SL4.
2. 1" CARFLEX LIQUIDTIGHT FLEXIBLE NONMETALLIC CONDUIT TO PULL BOX WITH #6 AL DX CONDUCTORS AND 1-#6 COPPER BOND (FOR GROUNDING) FROM PULL BOX TO POLE HAND HOLE, PER UTILITY REQUIREMENTS.
3. 30,000 LUMEN 250W LIGHT AND POLE WITH A 32'-0" MOUNTING HEIGHT AND A SINGLE 10' X 11' MAST ARM (SEE SRP - UNDERGROUND LIGHTING COMPATIBLE UNITS STREETLIGHTS-HIGH RISE STREAMLINED AND ARCHITECTURAL DETAIL ON SHEET SL4) TO BE INSTALLED BY SRP. THIS CONTRACTOR WILL INSTALL CONDUIT, SONOTUBE AND PULL BOX ONLY (PER SRP DIRECT BURIED STREET LIGHT AND PULL BOX DETAILS SHEET SL4). LIGHT SHALL BE CENTERED 4'-0" FROM BACK OF CURB. CONFIRM ALL CONSTRUCTION SPECIFICATIONS AND REQUIREMENTS WITH SRP PRIOR TO ANY CONSTRUCTION ACTIVITY.



WRIGHT ENGINEERING CORPORATION
PROJECT NO: **18212-02**
DESIGN BY: NBG
DRAWN BY: NBG
CHECKED BY: AMB

WRIGHT engineering corporation
ELECTRICAL ENGINEERING AND DESIGN
165 EAST CHILTON DRIVE • CHANDLER, ARIZONA 85225
PHONE 480.497.5829 • FAX 480.497.5807
www.wrightengineering.us

PROJECT: **QUEEN CREEK, ARIZONA
BARNEY FARMS - SIGNAL BUTTE RD
QUEEN CREEK RD & SIGNAL BUTTE RD**
TITLE: **STREET LIGHT PLAN**

NO.	DATE	SUBMITTALS/REVISIONS (DESCRIPTIONS)
1	AUG 2018	1ST SUBMITTAL

Professional Engineer Seal: ADAM M. BOWERS, License No. 46691, State of Arizona, Expires 9-30-16.

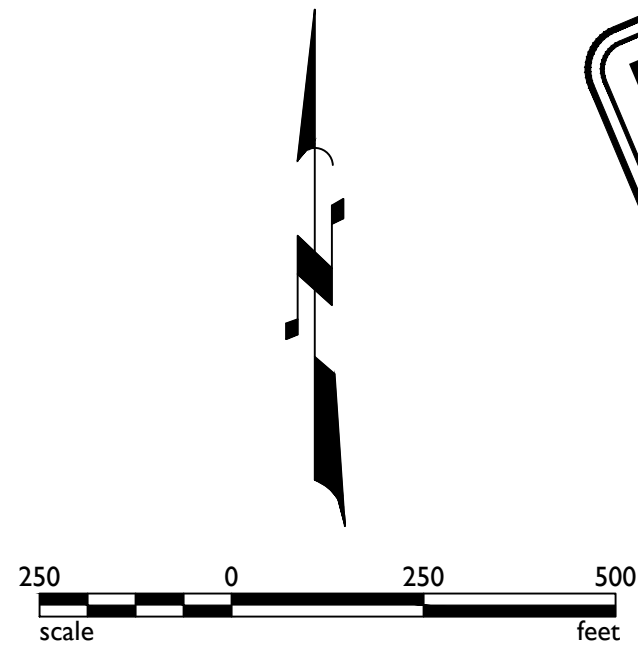
DRAWING NO: **SL3**
OF 4

H:\2018\18212-Barney Farms SL & SE\18212-SL-Signal-Butte-Road.dwg

I6-394 - Fulton Homes Barney Farms - Phase IC - Utility Plans

Nov 19, 2018 12:40am S:\Projects\2016\16-394\Civil\Construction Documents\Phase 1\Phase 1C\Utility\Cover Sheets\16-394 - PH1C - UTI - ID01.dwg

njeans



THE PROMPT PAY LAW WILL BE ALTERED FOR THIS CONTRACT NOTICE OF EXTENDED PAYMENT PROVISION
The construction contract will allow the owner to make payment within thirty (30) days after certification and approval of billings.

2045 S. Vineyard Ave, Suite 101
Mesa, AZ 85210
T:480.503.2250 | F:480.503.2258
www.epsgroupinc.com

Fulton Homes Barney Farms - Phase IC
Utility Plans
Queen Creek, Arizona

Project:

Utility Index Sheet

Revisions:

Call at least two full working days before you begin excavation.

ARIZONA

State of Arizona
Department of Transportation
Maricopa County (R22063-1100)

Designer: SB
Drawn by: MG

PRELIMINARY
Not For Construction
or Recording

Job No.
16-394

ID01

Sheet No.
3
of 24

E18-0532

EPS-01